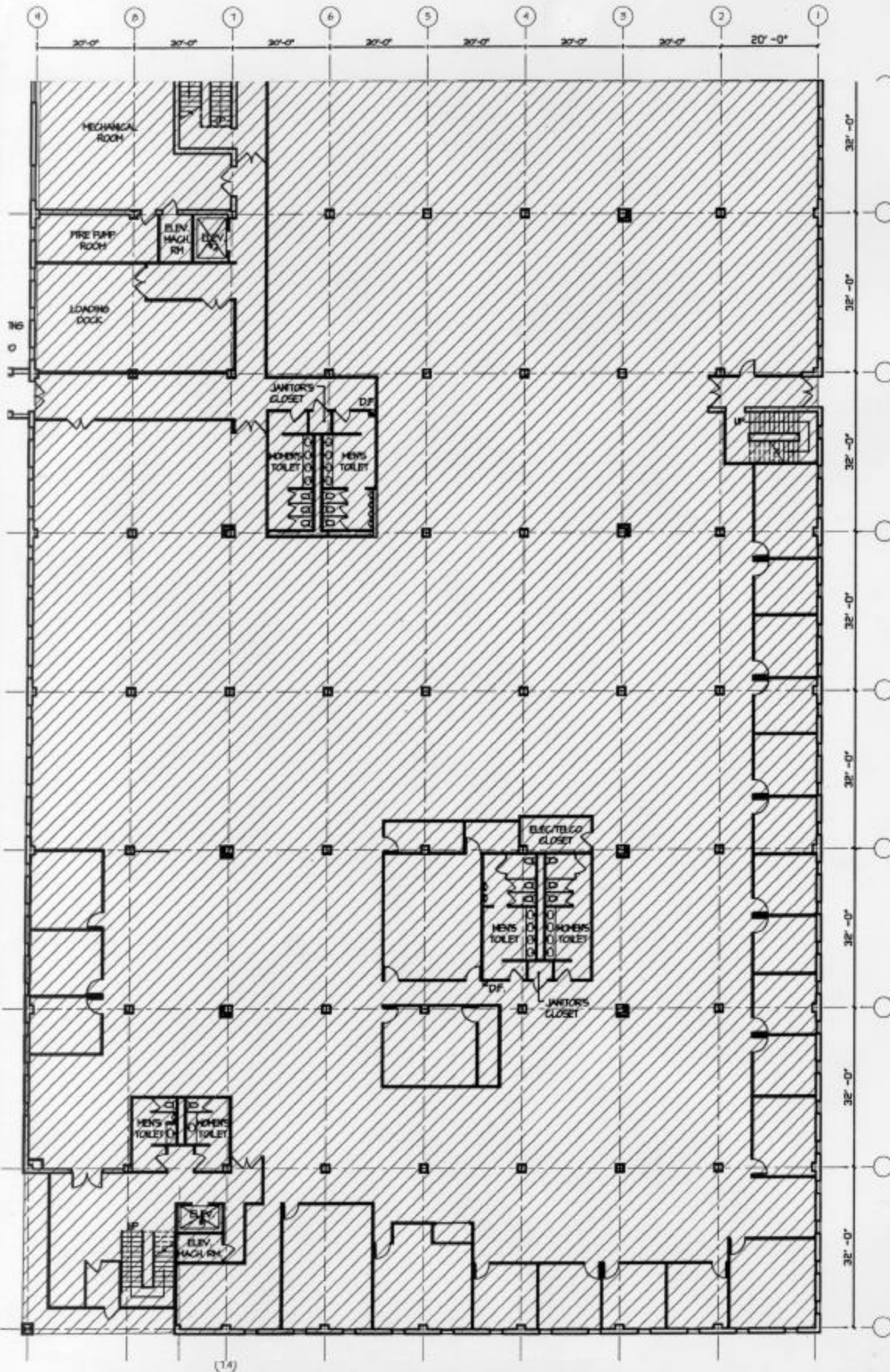




COMMERCIAL REALTY

BUILDING 1100 & 1200
100 AMERICAN WAY
MORRIS PLAINS, NEW JERSEY 07950



REVISION NUMBER NOW IN EFFECT

- **Marc R. Parette A.I.A.**
 NCARB Registration 44264
 New Jersey Architect 10456
 New York Architect 024312
 Pennsylvania Architect 0147388
 Maryland Architect 10445
 New Jersey Planner 4981
- **Gregory J. Somjen A.I.A.**
 NCARB Registration 47178
 New Jersey Architect 13349
 Massachusetts Architect 9529
 Delaware Architect 6616
 Virginia Architect 0401 011210
 Texas Architect 15996
 Connecticut Architect 8622
- **Stephen D. Quick A.I.A.**
 New Jersey Architect 14175
- **John D. Carlton A.I.A.**
 New Jersey Architect 11723
- **Andrew G.M. Blysk A.I.A.**
 NCARB Registration 54388
 New Jersey Architect 12980
 Virginia Architect 0401 012430

© COPYRIGHT 2002 PARETTE • SOMJEN • ASSOCIATES, P.C.

SIGNATURE
SDQ
DRAWN BY
2041
PROJECT NUMBER
06 SEPTEMBER 2002
DATE OF RELEASE

SHEET
1 11